

Monitor and identify  
the main caries causing  
**bacteria** with  
**Saliva-Check Mutans**  
from **GC**.



Cavities and pre-cavitation white spot lesions indicate an active disease caused by cariogenic bacteria such as *Streptococcus mutans*.

Enhance the preventative measures and motivate your patients with **Saliva-Check Mutans**, a simple and accurate chairside test which detects, in 15 minutes only, the patient's level of *S. mutans*.



Part of GC's Minimum Intervention program.

GC EUROPE N.V.  
Head Office  
Tel. +32.16.74.10.00  
info@gceurope.com  
<http://www.gceurope.com>

GC UNITED KINGDOM Ltd.  
Tel. +44.1908.218.999  
info@uk.gceurope.com  
<http://uk.gceurope.com>

**GC**



# GC Saliva-Check Mutans

## Chairside diagnostic device to rapidly detect high levels of Streptococcus mutans.

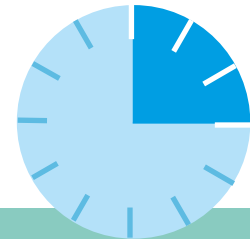
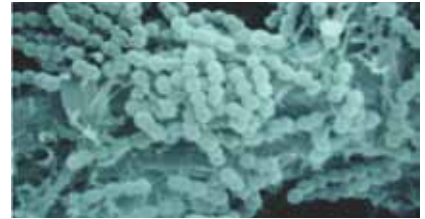
### Why test your patients' Streptococcus mutans level?

The Streptococcus mutans bacterial species plays a leading role in the initiation of dental caries. When used with other clinical information, salivary level of this bacterium is useful for caries risk assessment in patients.

### Accurate results in just 15 minutes

Saliva-Check Mutans uses a very specific immunochromatography process. Not reliant on bacteria growth, this means **incubators** or other devices are not needed. Therefore, the traditional culture test is no longer necessary and **accurate results are available in just 15 minutes**. Accuracy is possible as the test strip contains 2 monoclonal antibodies that **selectively detect** only the S. mutans species, meaning no other bacteria contaminates the results.

In cases of positive results, a red line is shown on the test (T) line - meaning the patient has a level of S. mutans equal to or above 500 000 colony forming units per ml (cfu/ml) saliva.

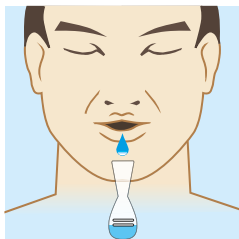


**15 min**

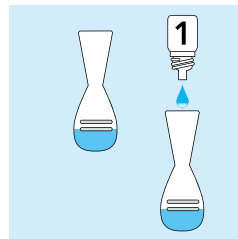
### Who to test

- New patients – particularly children and the elderly
- Patients with lower natural oral protection because of low salivary flow
- Patients with an acidic diet, low oral pH or high frequency of fermentable carbohydrates
- Patients undergoing periodontal treatment due to higher risk of root surface caries
- Patients before extensive restorative treatment to avoid recurrence of cavitations
- Soon to be parents or young child carers, to prevent transmission

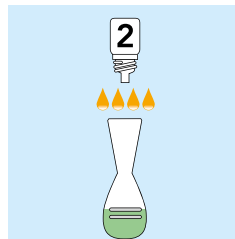
### How to test



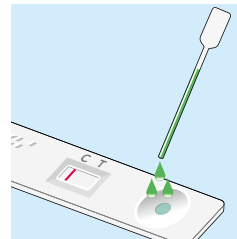
1. Chew the wax, collect the saliva



2. Add 1 drop of Reagent 1, tap the container 15 times



3. Add 4 drops of Reagent 2, shake until saliva sample becomes green



4. Dispense 3 scales of saliva in the sample window of the test device and wait 15 minutes

5. After 15 minutes, observe the Control line C and result in Test window T

#### a. Positive result

Either a faint or clear red line appearing means there are over 500 000 cfu/ml of S. mutans



#### b. Negative result

No red line appearing means there are less than 500 000 cfu/ml of S. mutans



### Package

- 10 test kits - each contain
- MUTANS Test Device (1)
- Paraffin Gum (1), Pipette (1)
- Mixing container (1)
- 1 bottle of Reagent #1 (2 ml)
- 1 bottle of Reagent #2 (4 ml)



Motivate and educate your patients with this clear visual risk indicator

